



## ENGINEERING BULLETIN

Bulletin Number: 06-003

Date: September 7, 2006

Engineering Change:

Modem Setups

System: Xpert, XDark and 9210 Data Collection Platforms

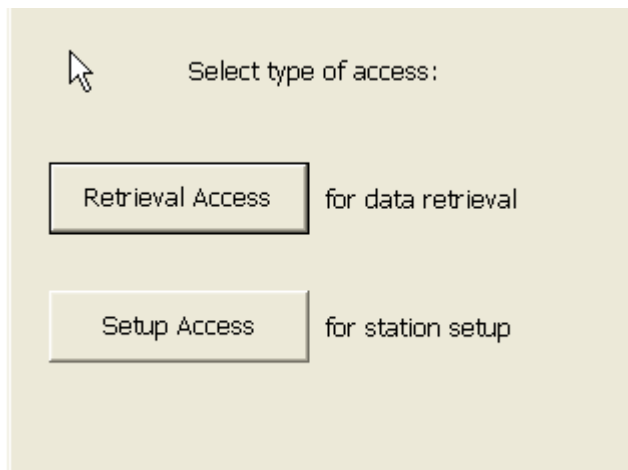
Originator: Warren Krug [warren.krug@noaa.gov](mailto:warren.krug@noaa.gov)

Approved by MSCB on: Not Required

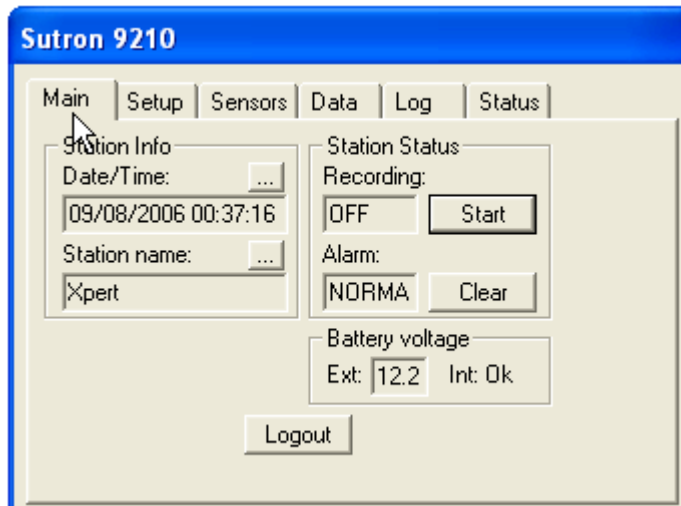
Some problems have been reported with the telephone modems on the Xpert family systems. This bulletin explain the correct software setups for the modems

The modems are 56kb voice/data modems using the Rockwell chip and are connected to the DCP via a RS232 serial port. On the Xpert and XDark COM 3 is used for the modem, on the 9210 systems COM 1 or 3 are used depending if another RS232 sensor is being used Please take the following step to insure proper operation of the modem. Any question please contact me.

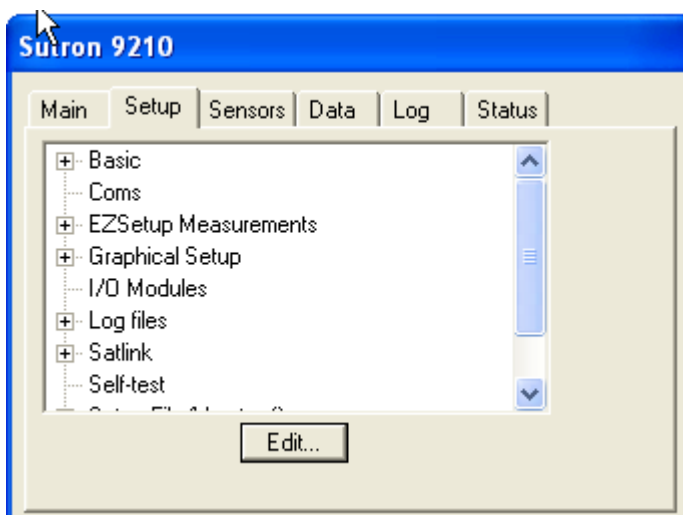
Using Xterm log onto the system and select Setup Access



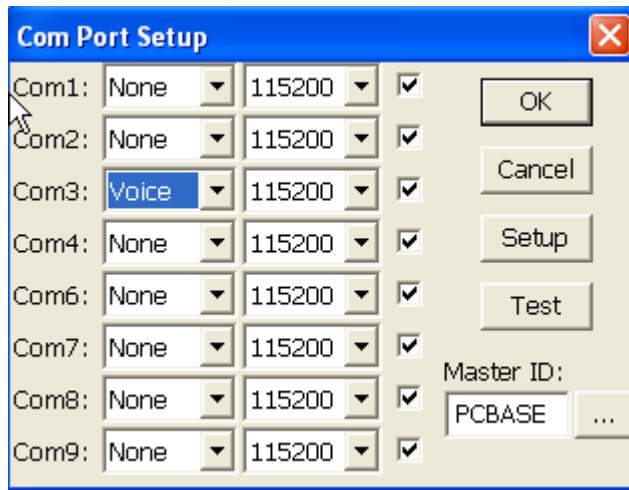
From the Main Menu, select Setup.



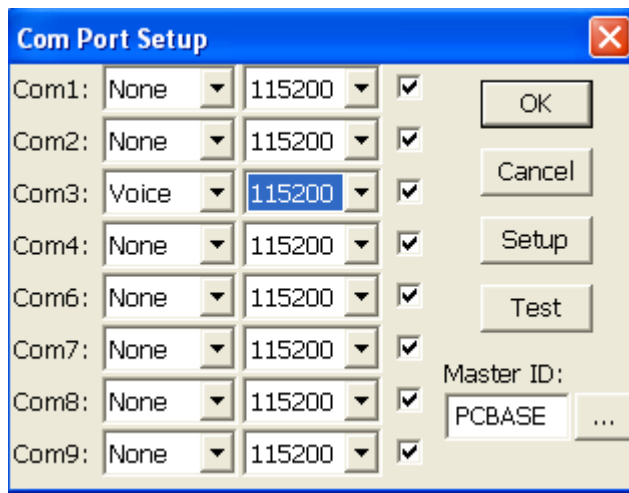
3. From the SETUP Menu, highlight Coms, click on Edit



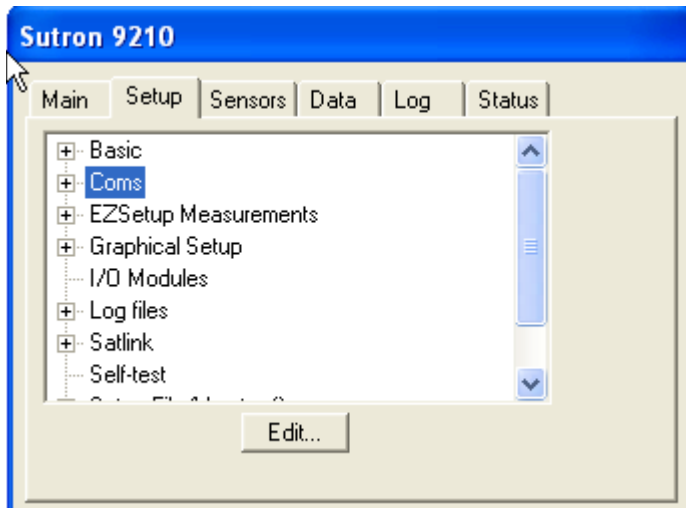
Find Com3 and using the pull down arrow on the first box to the right select voice as shown below



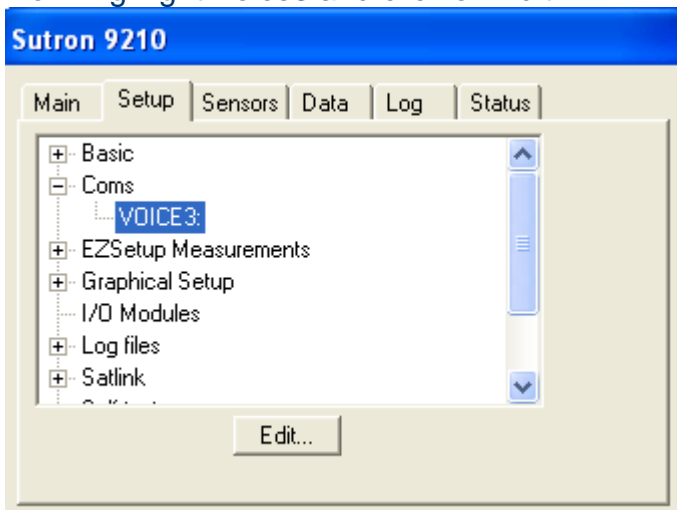
Find Com3 and using the pull down arrow on the second box to the right select the modem speed of 115200 as shown below.  
Make sure there is a check in the small box to the right of the speed value and Click OK



You should now see the Setup menu. Click on the + sign to the left of Coms

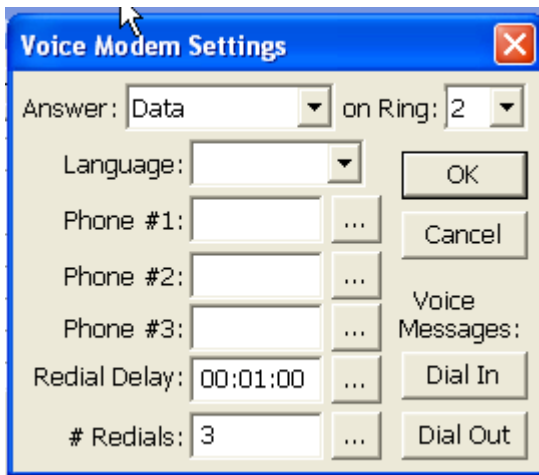


Now Highlight Voice3 and click on Edit



You will now see the Voice Modem Settings Menu.  
Find "Answer" and using the pull down arrow select Data.

Find "On Ring" and using the pull down arrow select 2. This is number of rings the modem will allow before answering



Click on OK and select the Main Menu page.

Save the changes as per the Users Manual

Click Start to turn on recording

Click Logout to exit the system

