

## Exporting Xpert Data Using 'Xpert Offline'

**Procedure Number:** SOP # 6.3.2.1.9

**Created:** February 4, 2017

**Created By:** Caleb Gostnell

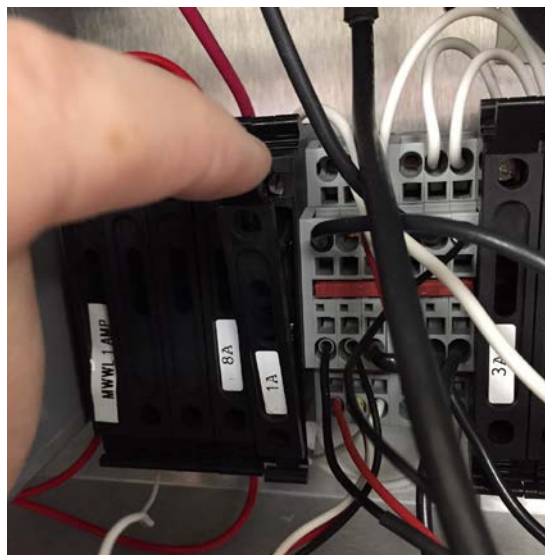
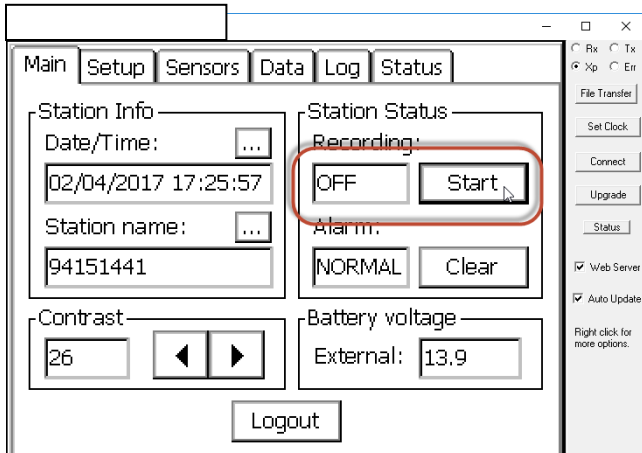
**Approved By:** Chris McGrath and Caleb Gostnell, February 7, 2017

1. **Title:** Exporting Xpert Data using 'Xpert Offline'
2. **Purpose:** This document describes the procedure for exporting data utilizing the 'Xpert Offline' software on the user's computer. This process is particularly useful when exporting large volumes of data as the processor in the user's computer is much faster than the processor in the Xpert DCP and the limited data transfer rate from the DCP to the computer is bypassed.
3. **Background/History:** Field crews have typically downloaded data logs by connecting laptops to the Xpert units via serial cable and completing the typical log exporting process as described in EB 07-007. However, depending on the log size and amount of data that needs to be exported, trying to download the logs via the serial port has become very burdensome. Serial port downloads have been reported to take up to an hour or more and can cause delays to the field crews completing maintenance at a station.
4. **Scope/Applicability:** FOD, CIL and SIL
5. **Main Processes:** There are several steps that may be needed in order to complete a data export using 'Xpert Offline'. These steps are described in detail in Step 6 below and Appendices A and B at the end of this document:
  - A) Installation of 'Xpert Offline' software on the user's computer.
  - B) If working with data from an older Xpert a Compact Flash to USB adapter will be needed in order to copy off data to the user's computer and the computer system time will need to be changed to UTC time to prevent a time offset from being applied to the data during the export process.
  - C) Data export utilizing 'Xpert Offline' software
6. **Detailed Sub-Processes/Checklists:**
  - A) **Software Installation –**

The 'Xpert Offline' software may either be installed by ISD or the user may simply place the necessary files in the appropriate location on their machine as described in Appendix A at the end of this document.

## B) Data Export Procedure –

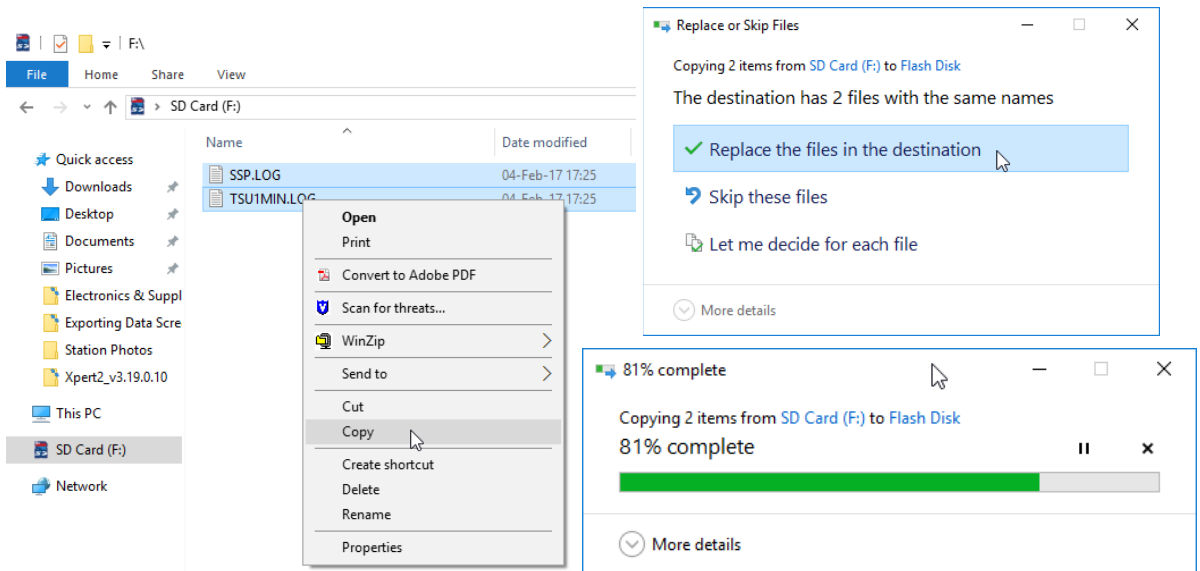
- 1) Stop logging in the DCP and power down the unit by disengaging the 1A fuse.



- 2) Remove the storage card and insert it into your computer. If it is an older Xpert you will need a Compact Flash card adapter. If it is a newer Xpert2 you should be able to insert the Secure Data (SD) card directly into the SD card slot of your computer.

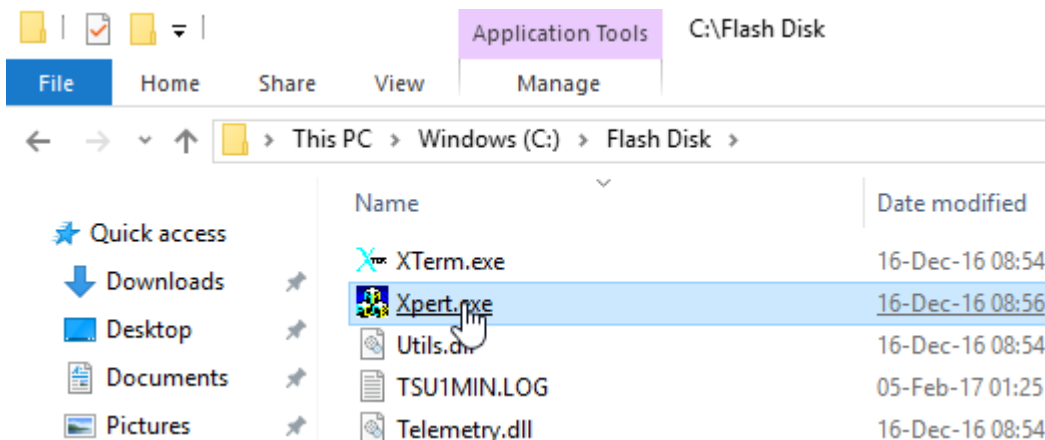


- 3) Browse to the card on your computer, copy the desired log files, and paste them into C:\Flash Disk. If prompted, choose to replace the files in the destination folder.  
**Important** - Ensure that you are using the proper Flash Disk folder for Xpert or Xpert2 data as outlined in Appendix A at the end of this document. If necessary, rename the Flash Disk folder per Appendix A.

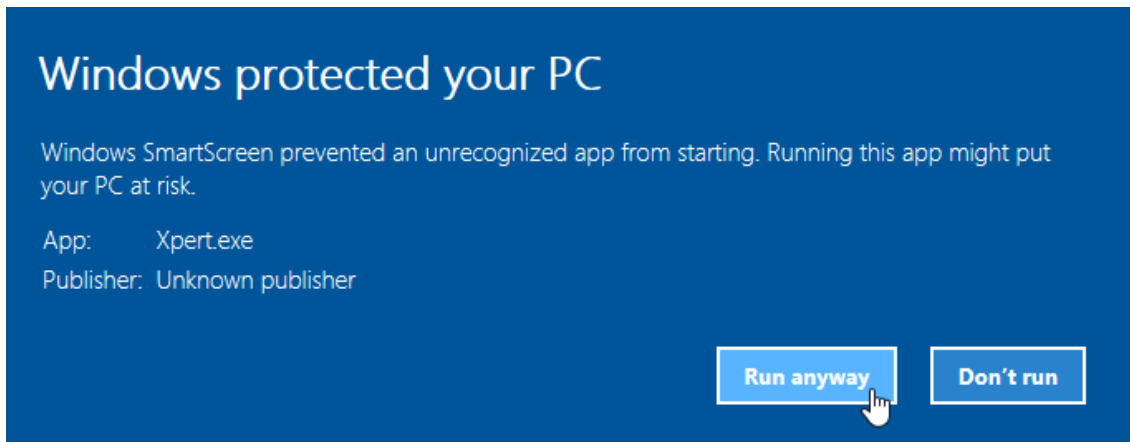
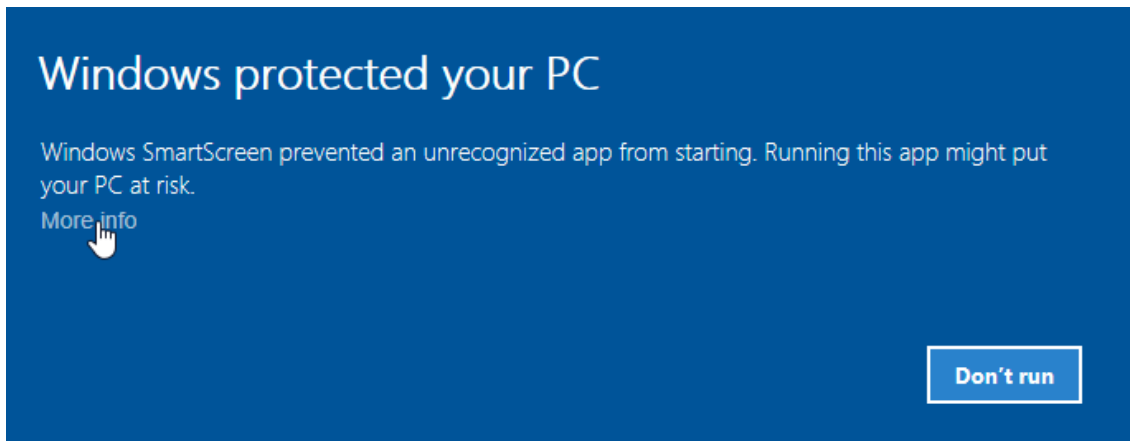


- 4) **Important** – If working with older Xpert files obtained from a Compact Flash card ensure that your PC clock is set to UTC time before opening the ‘Xpert Offline’ program (see procedure for changing to UTC time in Appendix B at the end of this document). If the computer system time is set to anything other than UTC time a time offset equal to the difference from UTC time will be applied to the data when it is exported which will not otherwise be apparent. This is not an issue with SD card data from newer Xpert2 systems.

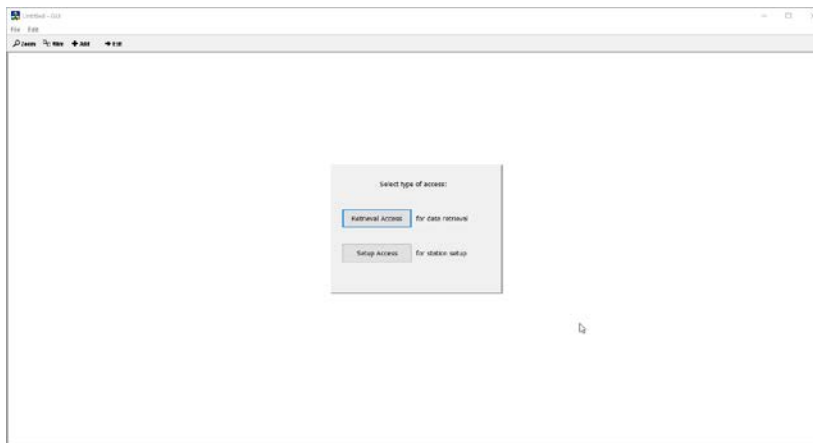
- 5) Click on the file Xpert.exe in C:\Flash Disk.



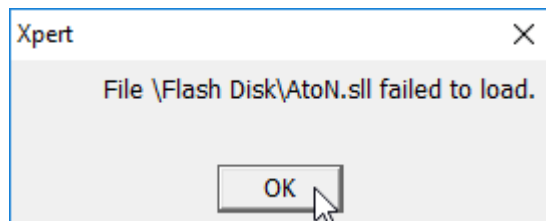
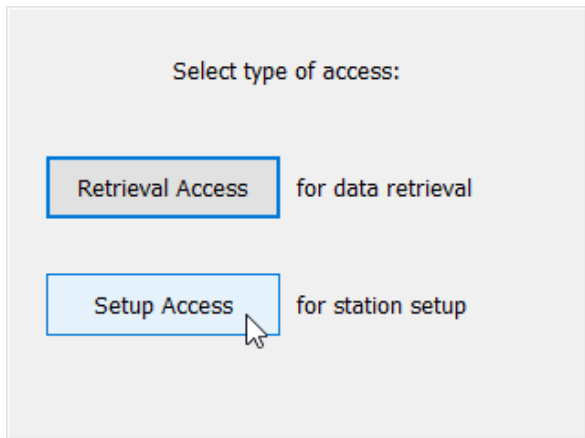
6) If prompted, click on More info and then Run anyway.



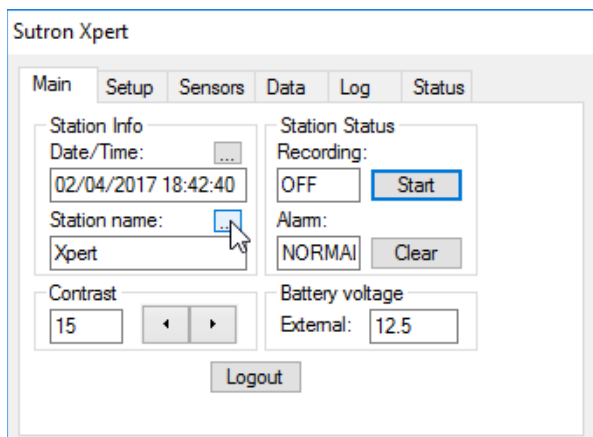
7) This will open the 'Xpert Offline' software which emulates an Xpert on your computer.



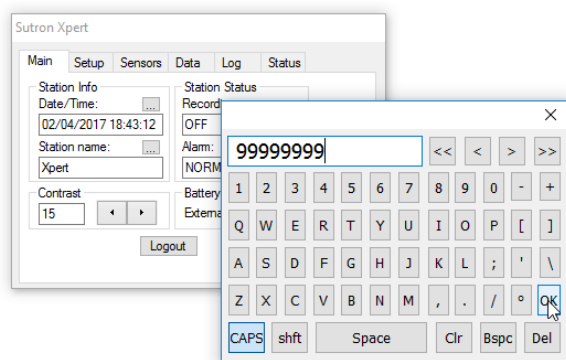
- 8) Click on Setup Access to login to the software. Click OK to bypass any errors that may pop-up related to files that fail to load or missing modules.



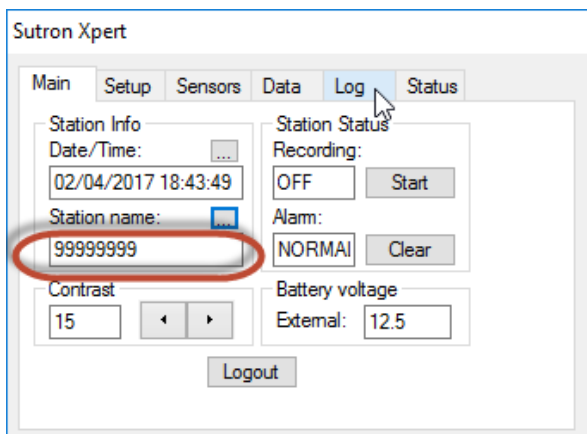
- 9) Click on the three dots to the upper right of the Station Name field.



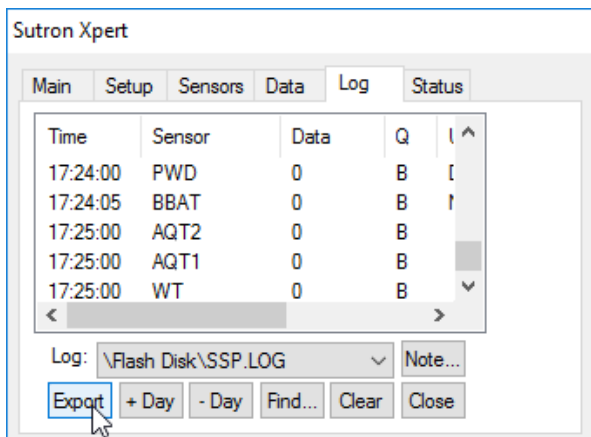
- 10) Enter the full eight digit Station ID for the data to be exported and click OK. This puts a header in the exported data file with the Station ID to help prevent file/data mix-ups.



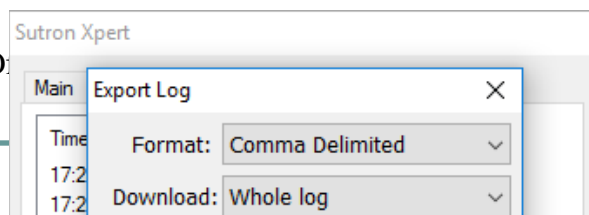
11) Confirm the correct station ID in the Station Name field and click on the Log tab.

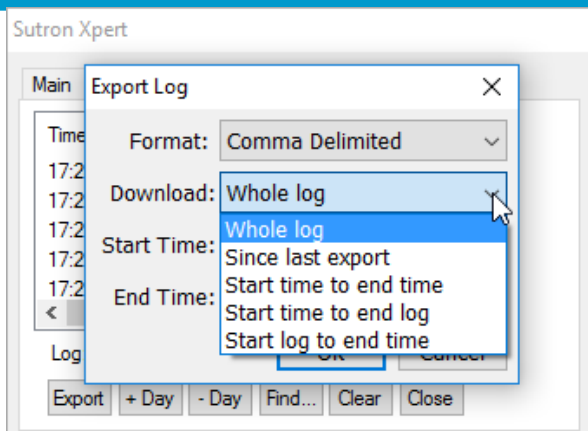


12) Select the desired log from the dropdown and click on Export.

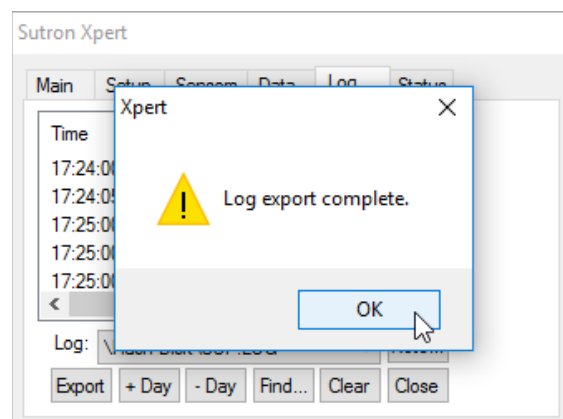
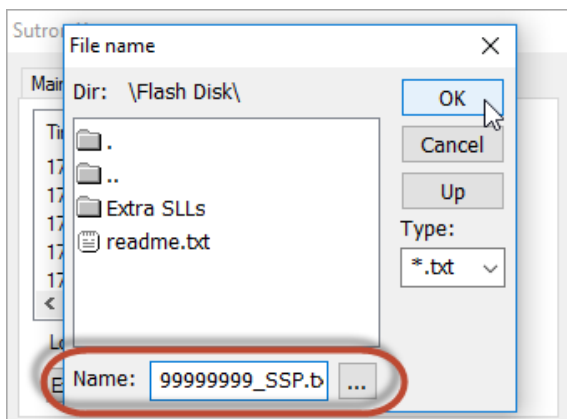


13) Select the desired timeframe for data to export and click OK. Note that due to the processor speed of your computer it is possible to export the whole log in several seconds.

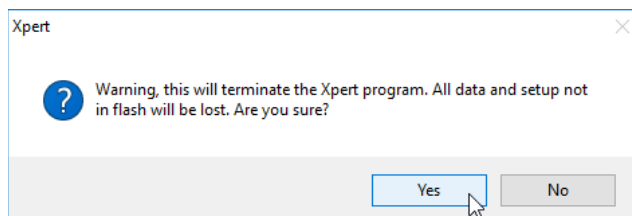
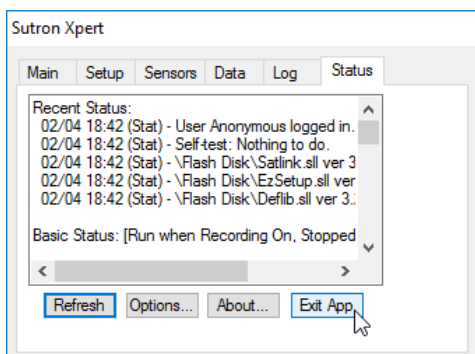




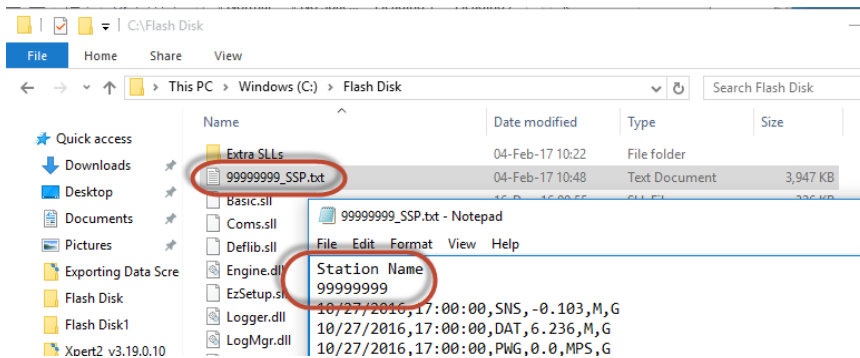
14) The exported file will be saved to C:\Flash Disk by default, although an alternate location can be selected if desired. Name the file with the appropriate eight digit Station ID and click on OK. The process should complete in a few seconds. After complete click on OK.



15) Click on the Status tab and then Exit App in order to exit the 'Xpert Offline' software. You will be asked to confirm that you wish to exit, click Yes.



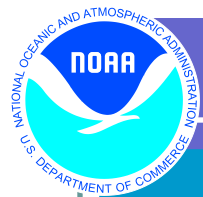
16) Browse to the exported file on your computer, this is C:\Flash Disk by default. Confirm that the file is named with the proper station ID. Open the file and confirm that Station ID is also present in the header and that the desired data are present.



17) **Important** - Reinstall the storage card in the DCP before powering it back up.



18) Data export procedure is complete. Submit the data as needed.



**7. Management/Responsibility:** SIL and CIL are responsible for maintaining this SOP.

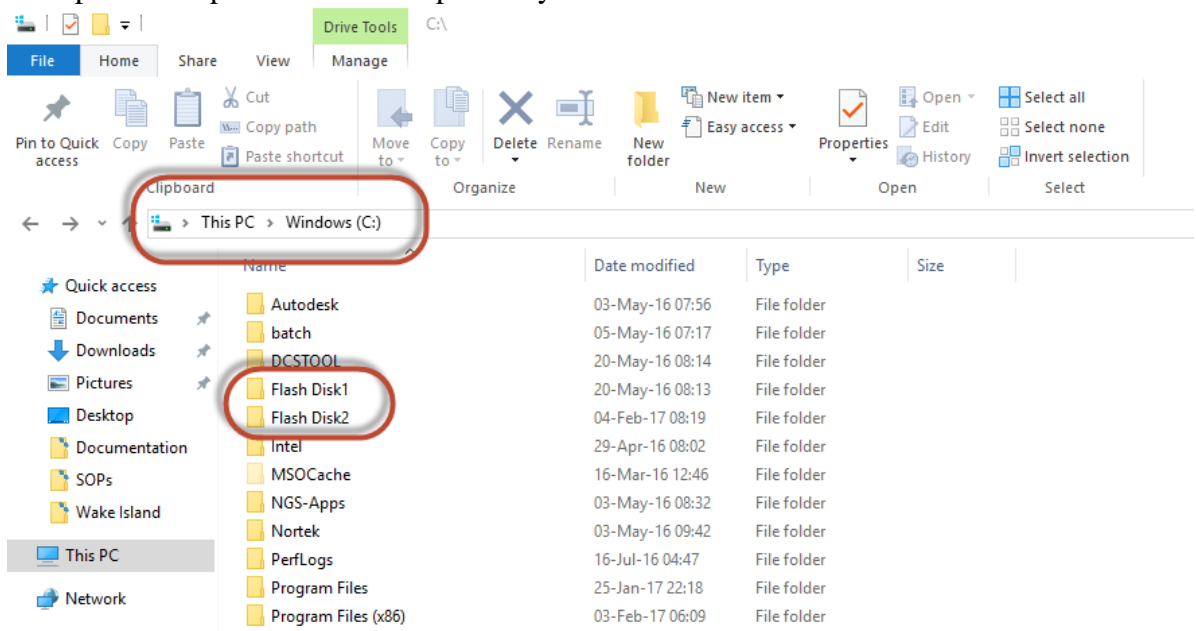
**8. References:**

- A) 3.2.3.9.I10 Engineering Bulletin 07-007, Downloading (Exporting) Data from the Xpert Log Files Using Xterm.

## Appendix A – Software Installation

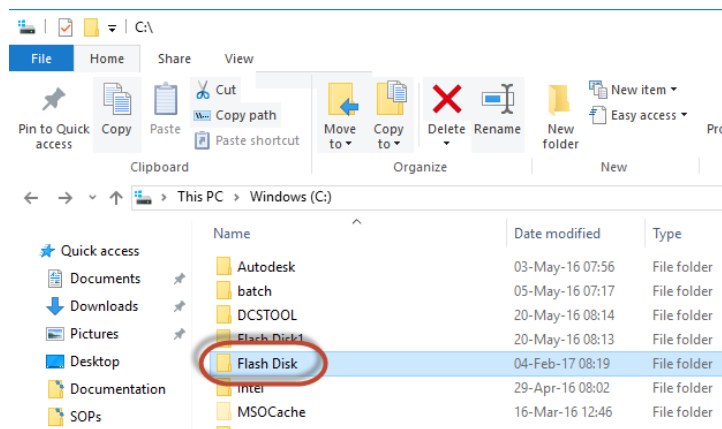
The user will need ‘Xpert Offline’ files to be installed in the root of their C-drive in a folder labeled “Flash Disk”. Because different versions of the software are used for exporting data from older Xpert units and newer Xpert2 units it may be beneficial to have both versions in place.

Note that installing both versions requires the folders to be named differently and for the user to rename the appropriate folder to “Flash Disk” when actually utilizing the program as it will only operate properly when originating from a folder titled “Flash Disk” located in the root of the C-drive. It is suggested to use folders titled “Flash Disk 1” and “Flash Disk 2” for Xpert and Xpert2 versions respectively as shown below.

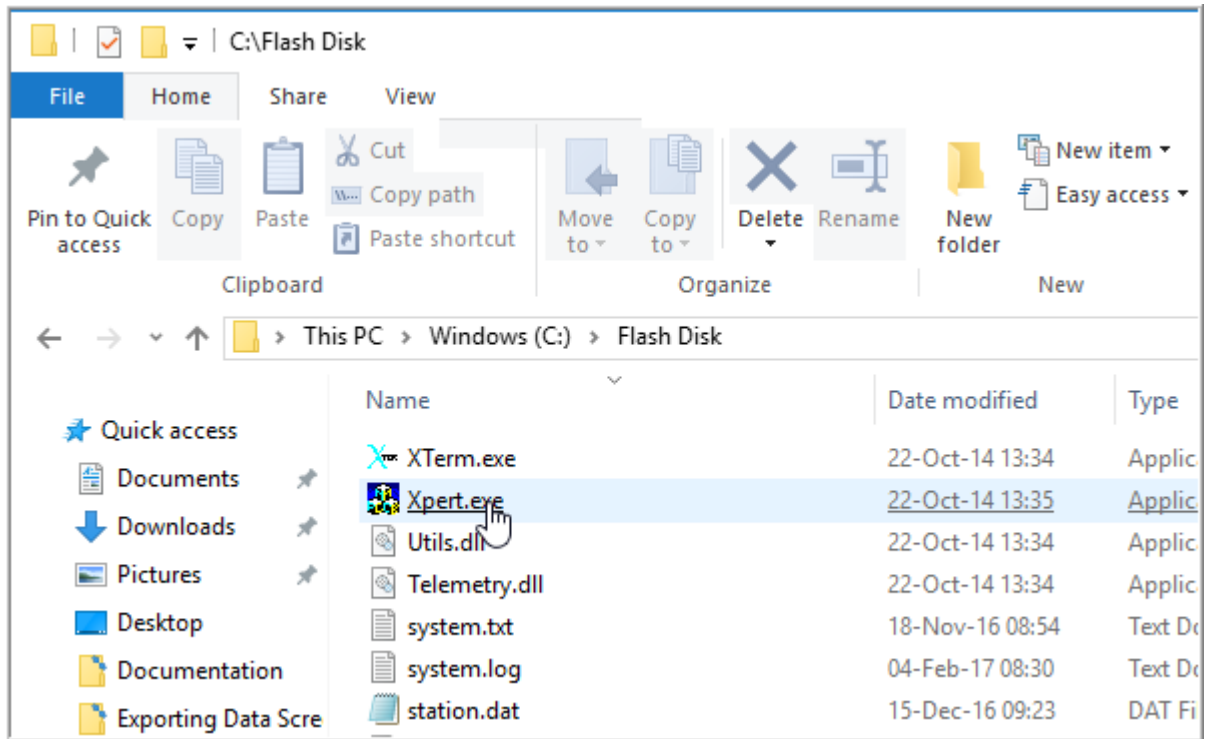


When wanting to utilize one of the two versions, simply:

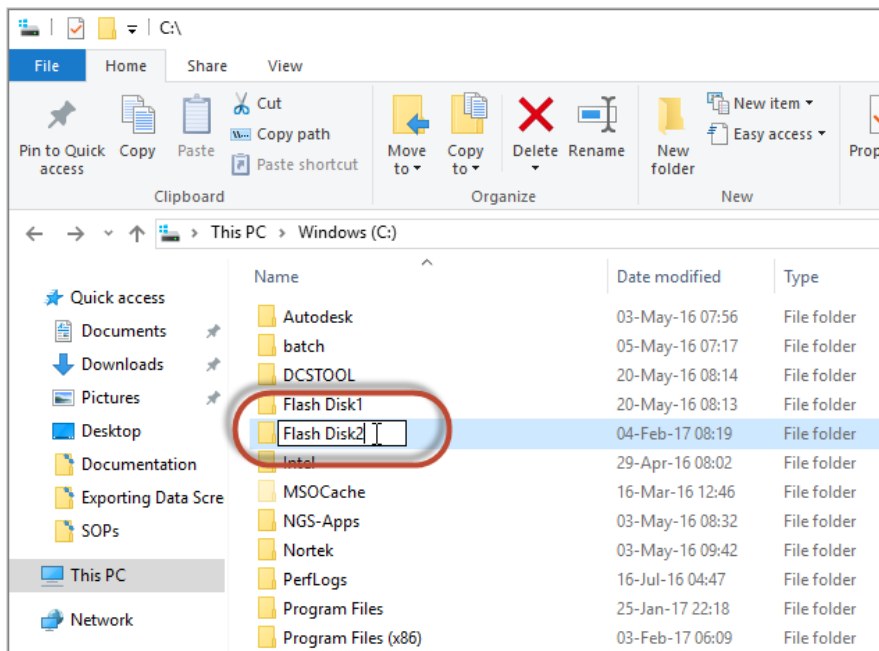
- 1) Remove the number from the end of the folder name for the appropriate version of the software so that it is just “Flash Disk”



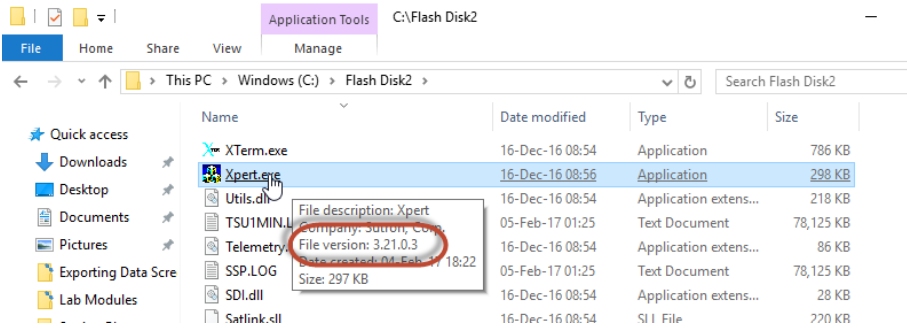
2) Run the procedure utilizing Xpert.exe from within the folder



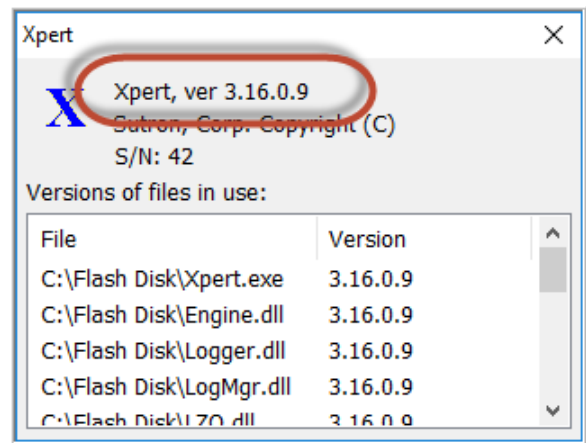
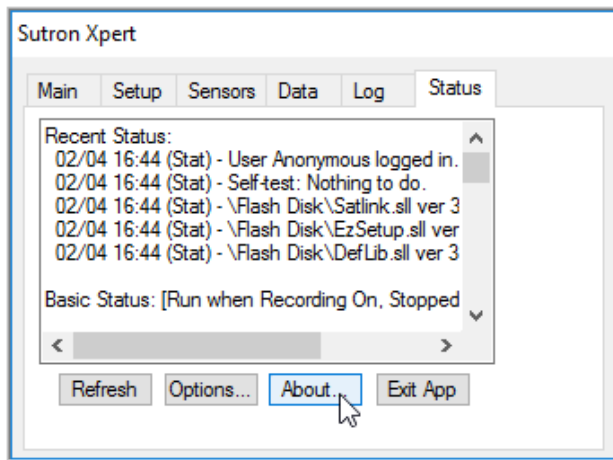
3) When done with the export procedure, add the number back to the end of the folder name to avoid confusion as to which version is which in the future.



- 4) If uncertain which version is which, hover your cursor over the Xpert.exe file in C:\Flash Disk and note the file version. If the version shown is 2.x then it is for use with data from a standard Xpert. If the version shown is 3.x then it is for use with Xpert2 data.



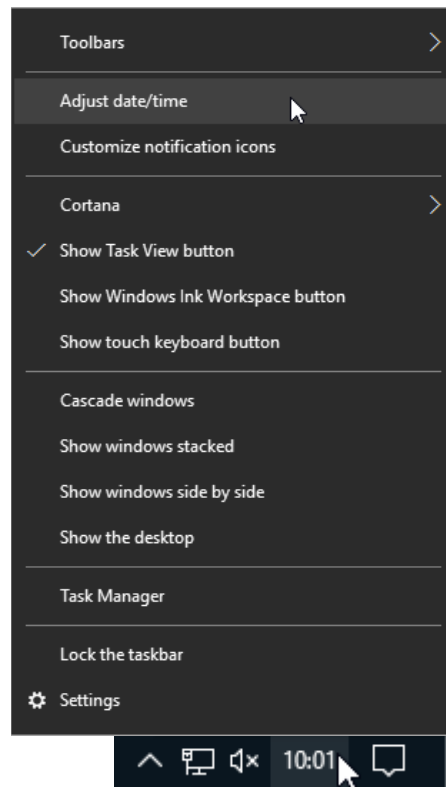
Alternately, the user may open Xpert.exe, go to the Status tab, click the about button. If the version shown is 2.x then it is for use with data from a standard Xpert. If the version shown is 3.x then it is for use with Xpert2 data.

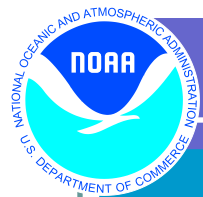


## Appendix B – Setting System Time to UTC Time

**Important** – If working with older Xpert files obtained from a Compact Flash card ensure that your PC clock is set to UTC time (see procedure for changing to UTC time in Appendix B). If it is set to anything other than UTC time a time offset equal to the difference from UTC time will be applied to the data when it is exported. This is not an issue with SD card data from newer Xpert2 DCPs.

- 1) Right click on the clock in the system tray at the bottom right of your screen and click on Adjust date/time





## 2) From the time zone dropdown select UTC time

Settings

Home

Find a setting

Time & language

Date & time

Region & language

Speech

### Date and time

10:02, Saturday, February 04, 2017

Time zone

(UTC-08:00) Pacific Time (US & Canada)

Adjust for daylight saving time automatically

On

Date and time

(UTC-03:00) Salvador

(UTC-02:00) Coordinated Universal Time-02

(UTC-01:00) Azores

(UTC-01:00) Cabo Verde Is.

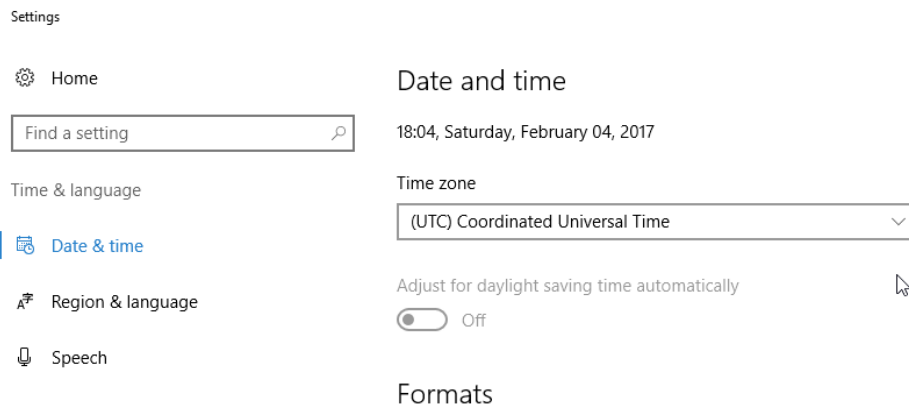
(UTC) Coordinated Universal Time

(UTC+00:00) Casablanca

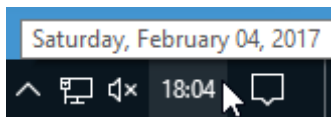
(UTC+00:00) Dublin, Edinburgh, Lisbon, London

(UTC+00:00) Monrovia, Reykjavik

(UTC+01:00) Amsterdam, Berlin, Bern, Rome, Stockholm, Vienna



- 3) Exit the settings screen and confirm that your system time has adjusted to UTC time



- 4) If desired, the system time can be changed back to local time after completing the data export by using the same process outlined above and selecting your local time zone in step 2